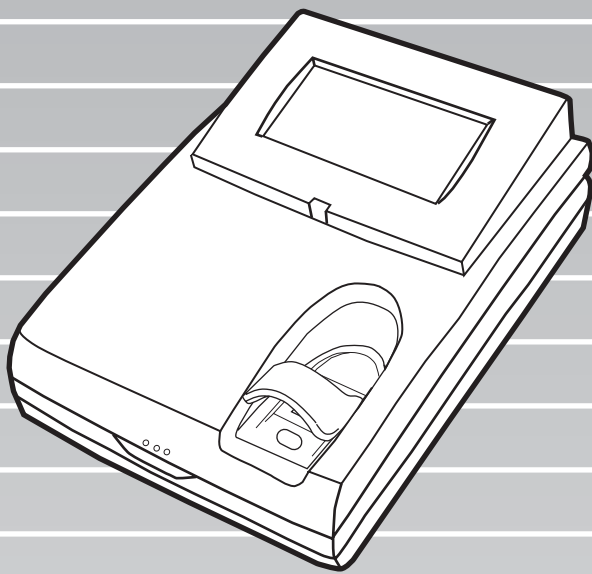


fi-5000N



Getting Started

CONTENTS

■ Regulatory Information	ii
■ Note, Liability	iii
■ Safety Precautions	v
Chapter 1 PREPARING THE DEVICE	1
1.1 Checking the Contents of the Device Package	1
1.2 Names of Parts	1
1.3 Keyboard.....	1
Chapter 2 INSTALLING THE fi-5000N	3
2.1 Installing the Scanner	3
2.2 Installing the fi-5000N	3
2.3 fi-5000N's Network Settings	4
2.4 Installing the Driver.....	6
2.5 Installing and Setting the fi-5000N Software.....	9
2.6 Registering Fingerprints.....	12
2.7 Scan Test	14
Appendix1 Troubleshooting.....	AP-1
Appendix 2 Daily Care.....	AP-3
Appendix 3 Using User Authentication By Fingerprint	AP-4

INTRODUCTION

Thank you for purchasing the fi-5000N.

This document describes the installation and basic operation methods of the fi-5000N. Before using, be sure to thoroughly read this manual to ensure correct operation.

The "Operator's Guide" is stored on the Setup Disk. The guide provides useful and detailed information on operations when you would like to use advanced features, and troubleshooting. Please also read the Operator's Guide for your reference.

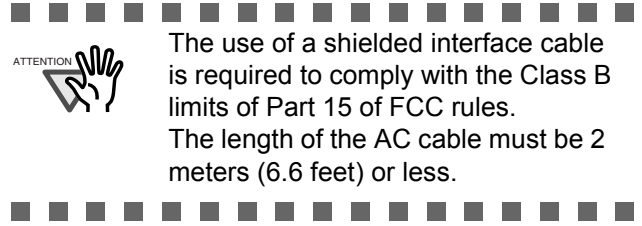
■ Regulatory Information

FCC declaration

This equipment has been tested and found to comply with the limits for a Class B digital device, pursuant to Part 15 of the FCC Rules. These limits are designed to provide reasonable protection against harmful interference in a residential installation. This equipment generates, uses, and can radiate radio frequency energy and, if not installed and used in accordance with the instruction manual, may cause harmful interference to radio communications. However, there is no guarantee that interference will not occur in a particular installation. If this equipment does cause harmful interference to radio or television reception, which can be determined by turning the equipment off and on, the user is encouraged to try to correct the interference by one or more of the following measures:

- Reorient or relocate the receiving antenna.
- Increase the separation between the equipment and receiver.
- Connect the equipment into an outlet on a circuit different from that to which the receiver is located.
- Consult your dealer or an experienced radio/TV technician.

FCC warning: Changes or modifications not expressly approved by the party responsible for compliance could void the user's authority to operate the equipment.



Canadian DOC Regulations

This digital apparatus does not exceed the Class B limit for radio noise emissions from digital apparatus set out in the Radio interference Regulations of the Canadian Department of Communications.

This Class B digital apparatus complies with Canadian ICES-003.

Le présent appareil numérique n'émet pas de bruits radioélectriques dépassant les limites applicables aux appareils numériques de la classe B prescrites dans le Règlement sur le brouillage radioélectrique dicté par le ministère des Communications du Canada.

Cet appareil numérique de la classe B est conforme à la norme NMB-003 du Canada.

Bescheinigung des Herstellers / Importeurs

Für den fi-5000N wird folgendes bescheinigt:

- In Übereinstimmung mit den Bestimmungen der EN45014(CE) funkentstört
- Maschinenlärminformationsverordnung 3. GPSGV, 06.01.2004: Der höchste Schalldruckpegel beträgt 70 dB (A) oder weniger, gemäß EN ISO 7779.

■ Note, Liability

BEFORE USING THIS PRODUCT, PLEASE READ THIS MANUAL CAREFULLY. IF THIS PRODUCT IS NOT USED CORRECTLY, UNEXPECTED INJURY CAN OCCUR TO USERS OR BYSTANDERS.

Keep this manual in a safe place so that it can be easily referred to during use of this product.

While all efforts have been made to ensure the accuracy of all information in this manual, PFU assumes no liability to any party for any damage caused by errors or omissions or by statements of any kind in this manual, its updates or supplements, whether such errors are omissions or statements resulting from negligence, accidents, or any other cause. PFU further assumes no liability arising from the application or use of any product or system described herein; nor any liability for incidental or consequential damages arising from the use of this manual. PFU disclaims all warranties regarding the information contained herein, whether expressed, implied, or statutory.

Use in High-safety Applications

This product has been designed and manufactured on the assumption that it will be used in office, personal, domestic, regular industrial, and general-purpose applications. It has not been designed and manufactured for use in applications (simply called "high-safety applications" from here on) that directly involve danger to life and health when a high degree of safety is required, for example, in the control of nuclear reactions at nuclear power facilities, automatic flight control of aircraft, air traffic control, operation control in mass-transport systems, medical equipment for sustaining life, and missile firing control in weapons systems, and when provisionally the safety in question is not ensured. The user should use this product with adopting measures for ensuring safety in such high-safety applications. PFU LIMITED assumes no liability whatsoever for damages arising from use of this product by the user in high-safety applications, and for any claims or compensation for damages by the user or a third party.

Fingerprint Authentication

Fingerprint authentication technology is employed in the fi-5000N. Data generated from a user's fingerprint information is stored in this product as a source data to authenticate registered users (referred to as "Authentication Data"). To help prevent misappropriation or misuse of the Authentication Data, the product provides the following:

- Authentication Data is encrypted.
- Authentication Data is stored in a manner to make it difficult to search or extract.
- Authentication Data is used for the purpose of identifying PC's on the network, and in a way without sending the Authentication Data to the network.

The Authentication Data may be categorized as personal data and may be subject to various data protection and privacy laws. You are responsible for ensuring all use is in compliance with all such applicable laws.

THE RELIABILITY OF THE FINGERPRINT AUTHENTICATION TECHNOLOGY AND THE MEASURES USED TO PROTECT THE AUTHENTICATION DATA, SUCH AS ENCRYPTION, ARE NOT GUARANTEED ALWAYS TO BE EFFECTIVE AND ACCURATE, OR WITHOUT ERROR. YOU USE THE FINGERPRINT TECHNOLOGY AUTHENTICATION AT YOUR OWN RISK. IN NO EVENT WILL PFU BE LIABLE FOR ANY LOST PROFITS, INCIDENTAL OR CONSEQUENTIAL DAMAGES ARISING FROM OR RELATING TO THE FINGERPRINT TECHNOLOGY, AUTHENTICATION DATA, ANY PERFORMANCE OR LACK OF PERFORMANCE OF THE FINGERPRINT TECHNOLOGY OR ANY MISUSE OR DISCLOSURE OF THE AUTHENTICATION DATA, WHETHER BASED ON CONTRACT, TORT, STRICT LIABILITY OR ANY OTHER CLAIM, EVEN IF PFU IS APPRISED OF SUCH DAMAGES.

Trademarks

Microsoft and Windows are registered trademarks of Microsoft Corporation in the United States and/or other countries.

ISIS, QuickScan and their respective logos are trademarks or registered trademarks of Pixel Translations, a division of Captiva Software Corporation in the United States.

Adobe, the Adobe logo, and Acrobat are either registered trademarks of Adobe Systems Incorporated in the United States and/or other countries.

Other product names are the trademarks or registered trademarks of the respective companies.

How Trademarks and Product Names Are Indicated In This Manual

References to operating systems (OS) are indicated as follows:

Windows 98	Microsoft® Windows® 98 operating system.
Windows Me	Microsoft® Windows® Millennium Edition operating system.
Windows 2000	Microsoft® Windows® 2000 Professional operating system.
Windows XP	Microsoft® Windows® XP Professional operating system, Microsoft® Windows® XP Home Edition operating system.

Where there is no distinction between the different versions of the above operating system, the general term "Windows " is used.

Manufacturer

PFU LIMITED

International Sales Dept., Imaging Business
Division, Products Group
Solid Square East Tower, 580 Horikawa-cho,
Saiwai-ku, Kawasaki-shi Kanagawa 212-8563,
Japan
Phone: (81-44) 540-4538

All Rights Reserved, Copyright© PFU LIMITED 2005

About Maintenance

The user must not perform repairs on this device. Contact the store where you purchased it or an authorized FUJITSU Image Scanner service provider to have repairs done on this product.

Warning Indications Used In This Manual

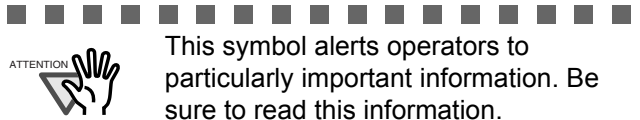


This indication alerts operators to an operation that, if not strictly observed, may result in severe injury or death.

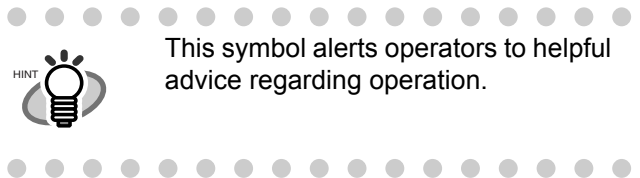


This indication alerts operators to an operation that, if not strictly observed, may result in safety hazards to personnel or damage to equipment.

Symbols Used In This Manual



This symbol alerts operators to particularly important information. Be sure to read this information.



This symbol alerts operators to helpful advice regarding operation.



A TRIANGLE symbol indicates that special care and attention is required. The drawing inside the triangle shows the specific caution.



A CIRCLE with a diagonal line inside shows action which users may not perform. The drawing inside or under the circle shows the specific action that is not allowed.



Outline characters on a colored background show instructions users should follow. It may also include a drawing that shows the specific instruction.

Screen Examples In This Manual

The screen examples in this manual are subject to change without notice in the interest of product improvement. If the actual displayed screen differs from the screen examples in this manual, operate by following the actual displayed screen while referring to the User's Manual of the scanner application you are using.

The screenshots in this manual were captured from FUJITSU TWAIN32 scanner driver, ScandAll 21 Image Capturing Utility Software, fi-5000N Software, FUJITSU ISIS scanner driver and QuickScan™ image capturing software.

■ Safety Precautions



Do not damage the AC cable.



A damaged AC cable may cause fire or electric shock. Do not place heavy objects on AC cables, or pull, bend, twist, heat, damage or modify AC cables. Do not use damaged AC cables or power plugs, or install any cables or power plugs to loose wall sockets.

Use only specified AC cables and connector cables.



Use only specified AC cables and connector cables. Failure to use the correct cables might cause electric shock and/or equipment failure. Do not use the AC cable provided with this product for other devices, since this might cause equipment failure and other troubles or an electric shock.

Use this device only at the indicated power voltage. Do not connect to multiple-power strips.



Use this device only at the indicated power voltage and current. Improper power voltage and current might cause fire or electric shock. Do not connect to multiple-power strips.

Do not touch the AC cable with wet hands.



Do not touch the power plug with wet hands. Doing so might cause electric shock.

Wipe any dust from the power plug.



Wipe off any dust from metal parts on the power plug or metal fittings with a soft, dry cloth. Accumulated dust can cause fire or electric shock.

Do not install the device in locations that has oil smoke, steam, humidity, and dust.



Do not install the device in locations subject to oil smoke, steam, humidity, and dust. Doing so might cause a fire or electric shock.

Turn the device OFF if it is damaged.



If the device is damaged for any reason, turn the device off and unplug the power cable. Contact the store where you purchased the device.

Do not put liquids inside the device.



Do not insert or drop metal objects in/on to the device. Do not splash or allow the device to get wet.



If foreign objects (water, small metal objects, liquids, etc.) get inside the device, immediately turn off the device and disconnect the power plug from the power outlet. Then, contact the store where you bought the device or the Maintenance Service Center. Pay particular attention to this warning in households where there are small children.

Do not touch the inside of the device unless necessary.



Do not take apart or modify the device. The inside of the device contains high-voltage components. Touching these components might cause electric shock or fire.

Do not use the device if you smell a strange odor.



If you detect excessive heat coming from the device or detect other problems such as smoke, strange smells or noises, immediately turn off the device and then disconnect its power plug. Make sure that any smoke coming from it has stopped, before contacting the store where you bought the device or an authorized FUJITSU scanner service provider.

Before moving the device, disconnect the power plug from the power outlet.



Do not move the device with the power and any other cable connected as this can damage the cables, which can later cause fire, electric shock as well as injury. Before moving the device, be sure to disconnect the power plug from the power outlet, and all other cables. Make sure that the floor is free of any obstructions.



Do not install the device on unstable surfaces.



Make sure that the device is installed on a flat, level surface and that none of its parts extend beyond the surface top, such as a desk or table. Do not install the device on unstable surfaces. Install the device on a level surface that is free of vibration to prevent it from falling.



Install the device on a strong surface that will support the weight of the device and other devices.

Protect the device from static electricity.



Install the device away from strong magnetic fields and other sources of electronic noise. Also, protect the device against any static electricity, which can cause the device to malfunction.

Disconnect the power plug from the power outlet when the device is not used for a long period of time.



When the device is not going to be used for a long period of time, be sure to disconnect the power plug from the power outlet for safety.

Do not place heavy objects or stand on top of the device.



Do not place heavy objects on the device or use the device's surface top to perform other work. Improper installation might cause injuries and equipment failure.

Do not install the device in direct sunlight.



Do not install the device under direct sunlight or near heating apparatus. Doing so might cause excessive heat to build up inside the device, which can cause device trouble or even fire. Install the device in a well-ventilated location.

Firmly insert the power plug.



Firmly insert the power plug as far it can go into the power outlet.

Do not use the device immediately after moving it from a cold place into a warm room.



Do not use the device immediately after moving it from a cold place into a warm room. Condensation may occur, which might lead to operating errors. Let the device dry about one or two hours before you use it.

Chapter 1 PREPARING THE DEVICE

1.1 Checking the Contents of the Device Package

When you open the package containing the fi-5000N, please handle the main unit and its attachments carefully.

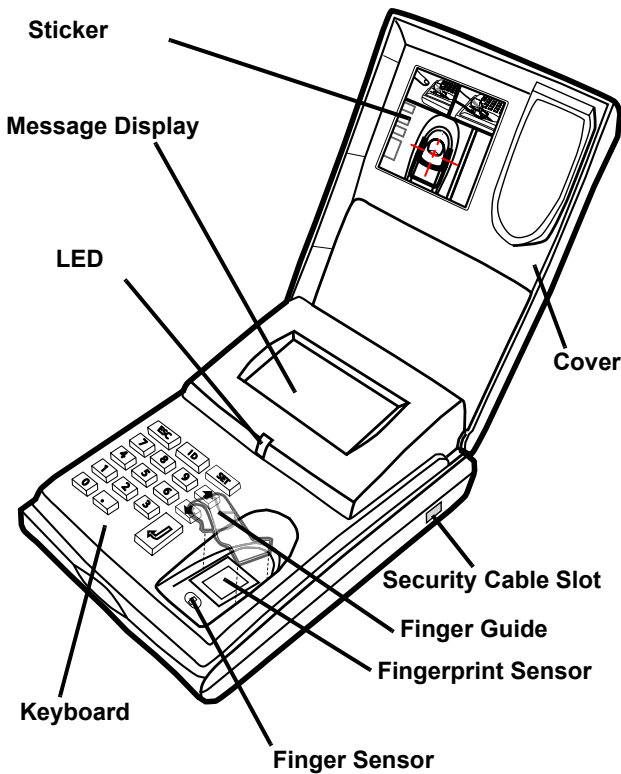
Make sure it contains all the parts listed in the package contents list that is included in the box.

If any parts are missing or defective, contact the store you purchased the device from.

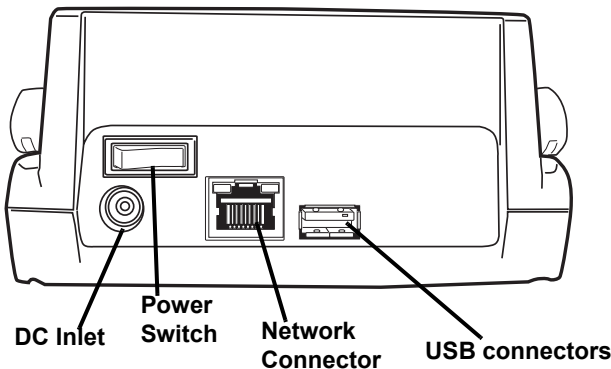
1.2 Names of Parts

This section describes the device's parts.

■ Front

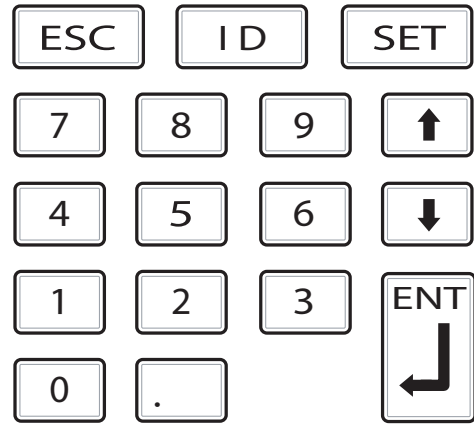


■ Rear



1.3 Keyboard

The following illustration shows the keyboard located under the white cover.



This keyboard is used for the following operations:

- fi-5000N network settings (administrator rights required)
- fi-5000N language settings (administrator rights required)
- Fingerprint registration
- Login by PIN

For details about the above operations, see "Chapter 2 INSTALLING THE fi-5000N".

The keyboard is also used for the following operations. (For details of these operations, see the "fi-5000N Operator's Guide".)

- fi-5000N user PIN setting
- Displaying the network setting status
- Displaying the name of fi-5000N on the network
- Displaying the firmware version
- Displaying the status of the connected scanner
- Pull mode user authentication settings (Administrator rights required)
- Automatic logout time settings (Administrator rights required)
- Message display's backlight automatic light-off settings (Administrator rights required)
- Beep sound settings (Administrator rights required)
- Host connection time-out settings (Administrator rights required)
- Initialization of fi-5000N settings



The Administrator's PIN (Personal Identification Number) is necessary to configure the settings which require the Administrator rights. The Administrator's PIN can be set from the fi-5000N Configuration Tool.



To view Operator's Guide included in Setup CD-ROM, you will need to install "Adobe® Acrobat® Reader" on your PC. You can install this program from your <SETUP DISK START UP SCREEN> by clicking the "USER'S GUIDE" button and then clicking "Install Adobe Acrobat Reader".



Chapter 2 INSTALLING THE fi-5000N

The scanning test written in section "2.7 Scan Test", is explained using the FUJITSU TWAIN 32 scanner driver and the ScandAll 21 scanning application. In order to perform this scanning test, follow the instructions in section "2.4 Installing the Driver", and install the FUJITSU TWAIN 32 scanner driver and the ScandAll 21 scanning application.

2.1 Installing the Scanner

Install the scanner following the installation requirements described in your fi-series scanner manual.

2.2 Installing the fi-5000N

1. Place the fi-5000N at its installation site.

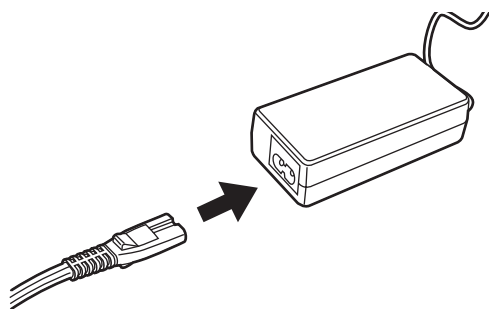
Install this product near the scanner. Install it in a place that does not affect the operation or maintenance of the scanner. Refer to "fi-5000N Operator's Guide" for details on the specifications of this product.

2. Connect the AC adapter.

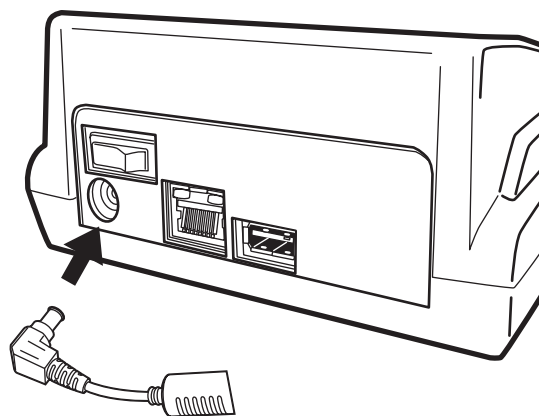


Use only the AC adapter and AC cable provided by the manufacturer.

1. Connect the AC cable to the AC adapter.

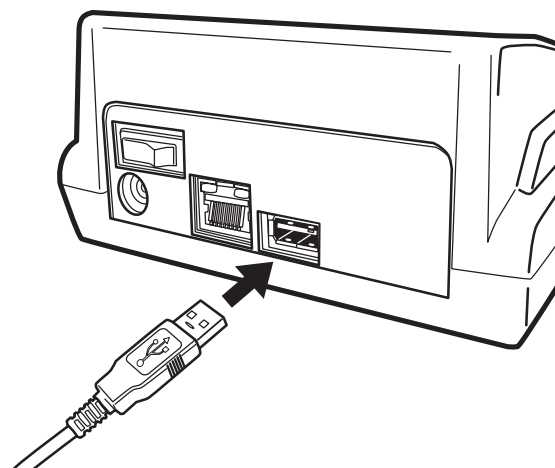


- 2) Connect the AC adapter connector to the fi-5000N's DC inlet.



- 3) Plug the AC cable into the outlet.

3. Connect the USB cable to the USB connector.



Be sure to use the USB cable provided with the scanner. Correct operation with commercially available cables is not guaranteed.

4. Connect the other end of the USB interface cable to the scanner.



The message "Scanner is disconnected" is displayed on the Message Display of fi-5000N if the scanner is not connected properly, or if the power of the scanner is turned off. Check the connection of the scanner when it happens. Refer to the scanner product manual for details on turning on the power of the scanner.

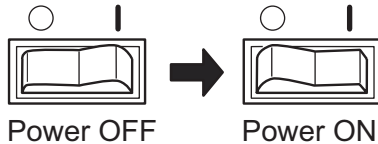
2.3 fi-5000N's Network Settings

■ Network Connection

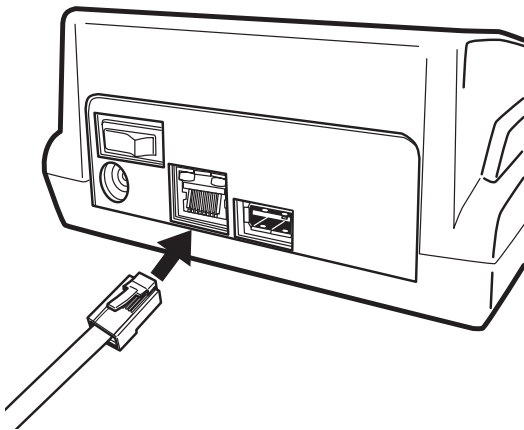
1. Turn on the power of the scanner and fi-5000N.

Refer to the scanner product manual for details on turning on the power of the scanner.

Turn on the fi-5000N by pressing the "I" of the power switch located at the back of the fi-5000N.



2. When "The network cable is disconnected" appears on the fi-5000N's Message Display, connect the network cable to the network connector at the back of fi-5000N.



The following screen appears.

```
Obtaining IP address
from DHCP server...

Cancel: [ESC]
```

If the network support DHCP and the process goes successfully, "Place your finger on the sensor." message appears.



When the above screen remains still, open the cover of the fi-5000N, and press the [ESC] key.

⇒ The following screen appears, and the IP address obtaining operation is canceled.

```
Cannot obtain IP
address from DHCP
server.

Setup: [SET]
```



■ Language Configuration

With the following procedure, change the language setting if necessary.

1. Open the fi-5000N's cover and press the [SET] key.

The following settings screen appears.

```
Setup
Register Finger
Change PIN Code
Show Network Config
```

2. With the [↓] key, select "Administrator Setup", and press the [ENT] key.

The screen to enter the Administrator's PIN (personal identification number) appears.

```
PIN: _

Cancel: [ESC]
```

3. Enter the Administrator PIN (the default setting is "5000"), and press the [ENT] key.

The following screen appears.

```
Administrator Setup
Configure Network
Pull Mode Authentic
Auto Logout Time
```

4. With the [↓] key, select "Change Language", and press the [ENT] key.

The language selection screen appears.

5. Press the [↑] or [↓] key to select the language and press the [ENT] key.

The message "selected language changed" appears and the messages will be displayed at the selected language.

■ Network Settings

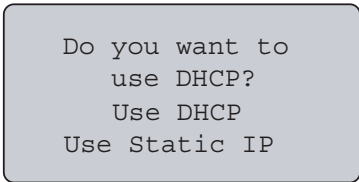
1. Open the fi-5000N's cover and press the [SET] key.

2. With the [↓] key, select "Administrator Setup", and press the [ENT] key.

The screen to enter the Administrator's PIN (personal identification number) appears.

3. Enter the Administrator PIN (the default setting is "5000"), and press the [ENT] key.
4. Select "Configure Network", and press the [ENT] (Enter) key.

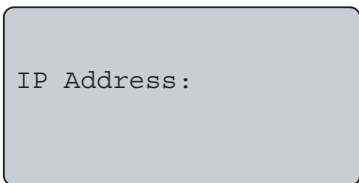
The following network configuration screen appears.



5. To obtain the IP address automatically from the DHCP (Dynamic Host Configuration Protocol) server, select "Use DHCP" and press the [ENT] key.
To set the IP address manually, select "Use Static IP" and press the [ENT] key.

If "Use DHCP" is selected: It is not necessary to specify the IP address, subnet mask and default gateway. Go to step 9.

If "Use Static IP" is selected: The following network configuration screen appears.



Certain DNS servers and DHCP servers, which do not support DNS update, may cause host name resolution problems when DHCP is specified in IP address settings with fi-5000N.

If you experience such problems, consult with your network administrator and take one of the following measures for fi-5000N and PC:

For fi-5000N,

1. Change to DNS server and DHCP server which support DNS update.
2. Set the IP address lease time longer in DHCP server settings.
3. Use static IP method.

For PC,

1. Change to DNS server and DHCP server which support DNS update.
2. Set the IP address lease time longer in DHCP server settings and register the PC name on the DNS server.
3. Use static IP method.



6. Enter the IP address.

The currently configured IP address is displayed on the entry field. To change, press the [ESC] key once to clear the entry field. Press the [ENT] key after you have entered the correct address.

7. Enter the subnet mask next.

The subnet mask currently configured is displayed on the entry field. To change, press the [ESC] key once to clear the entry field. Press the [ENT] key after you have entered the correct value.

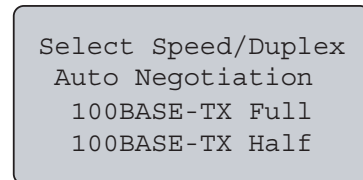
8. The default gateway settings screen appears next.

The portion specified at the IP address and subnet mask will be displayed. Enter the remaining portion of the default gateway and press the [ENT] key.

9. Enter the DNS server addresses (DNS1: Primary; DNS2: Secondary)

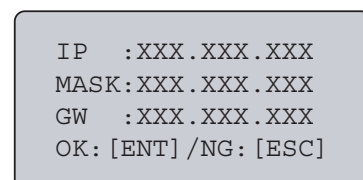
The currently configured address is displayed on the entry field. To change, press the [ESC] key once to clear the entry field. Press the [ENT] key after you have entered the correct value.

To skip this step, clear the currently displayed address or enter "0.0.0.0" on the entry field. If the default gateway is correct, the Speed/Duplex (Auto Negotiation) settings screen appears.



10. Press the [↑] or [↓] key to select one from among "Auto Negotiation", "100BASE-TX Full", "100BASE-TX Half", "10BASE-TX Full" and "10BASE-TX Half", and press the [ENT] key.

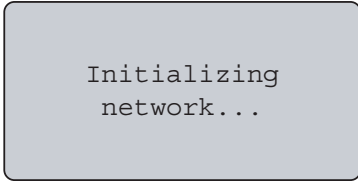
Usually "Auto Negotiation" is selected. The following network settings confirmation screen appears when you press the [ENT] key.



11. Confirm the contents of the settings.

To change the settings, press the [ESC] key until it returns to the setting screen of the item to change, and configure again.

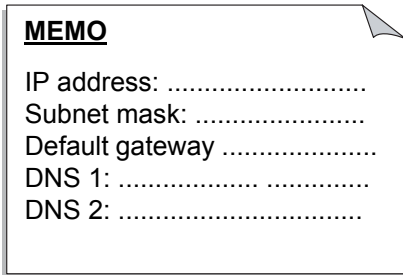
If the contents are correct, press the [ENT] key. The following screen appears.



The network settings are completed.



If the fi-5000N is initialized, the settings done in this section will return to their default values. In order not to forget the settings done in this section, take notes of them.



When "Use DHCP" is selected in step 5, it is not necessary to take notes for IP address, Subnet mask and Default gateway.



2.4 Installing the Driver

In order to scan documents from a PC using the scanner connected to fi-5000N, it is necessary to install the scanner driver and the scanning application software on to the PC.

The following scanner drivers and applications are provided.

- Scanner Driver:
FUJITSU TWAIN 32 Scanner Driver
FUJITSU ISIS Scanner Driver
- Scanning Application:
ScandAll 21 (for FUJITSU TWAIN 32)
QuickScan Pro™ (for FUJITSU ISIS)

Install the appropriate scanner driver for the application you will use.

The operation examples in this manual were described using the FUJITSU TWAIN 32 scanner driver and ScandAll 21 scanning application.

The following describes how to install each driver.



- Although the scanner is bundled with its own scanner driver, to connect the scanner to this product, you must use the scanner driver bundled with this product.
- QuickScan Pro™ is not bundled with this product. Use the software bundled with the scanner. Refer to the "Getting Started" provided with the scanner for installation details.
- In order to use ScandAll 21, you must install the ScandAll 21 bundled with this product. It was modified to comply with the fi-5000N.



For FUJITSU TWAIN32 Scanner Driver

■ Preparation

Confirm the following items before installing the software.

- Prepare the Setup CD-ROM
- Uninstall any older versions of FUJITSU TWAIN 32 driver if already installed.



Uninstall [Scanner Utility for Microsoft Windows] from [Add/Remove Programs] of the Control Panel.



■ Installing the FUJITSU TWAIN32 Scanner Driver



Windows XP screenshots are used in this section as examples. The windows and operations may slightly vary depending on your OS.




1. Turn on the power of the PC, and log on to Windows.



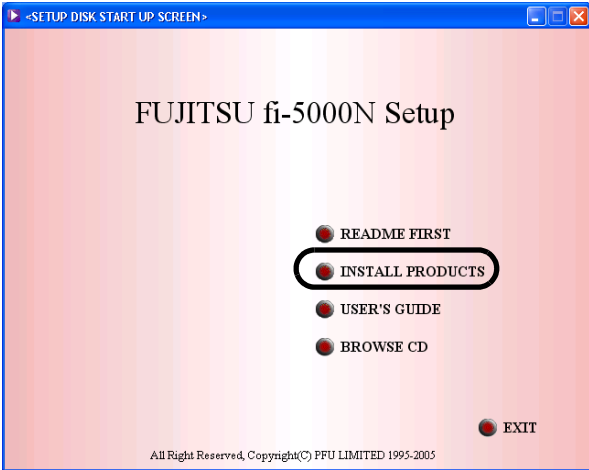
When using Windows 2000 or Windows XP, log on as a user with "Administrator" rights.



- Insert the Setup CD-ROM into the CD drive.
⇒ <SETUP DISK START UP SCREEN> appears.

ATTENTION  This screen may not appear when the "Autoplay" setting of your PC is OFF. In this case, run "Install.exe" in this CD-ROM directly from "Explorer" or "My Computer".

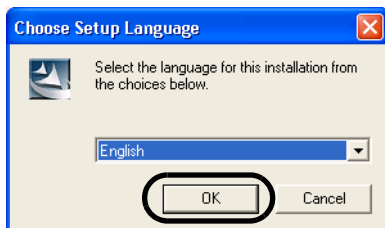
- Click [INSTALL PRODUCTS].



- Click [TWAIN Driver] on the window below.

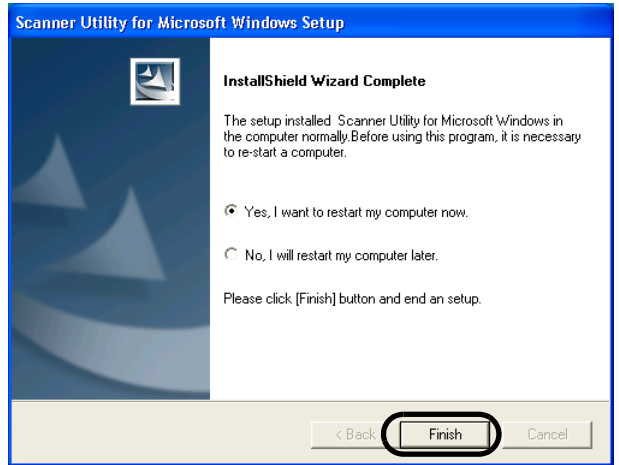


- Select a language used for installation on [Choose Setup Language] window and click [OK].




- Follow the instructions on the window to install the software.

- When the [InstallShield Wizard Complete] window appears, click [Finish].



Your PC will be restarted. Do not remove the Setup CD-ROM until your PC has completely restarted.

Installation of the FUJITSU TWAIN 32 scanner driver is completed.

ATTENTION  In order to use the scanner, it is also necessary to have a scanning application that complies with the TWAIN standard.


To perform the scanning test in section "2.7 Scan Test", install the ScandAll 21 scanning application provided with the fi-5000N.

If ScandAll 21 is already installed in the PC, uninstalled it before installing the ScandAll 21 provided with the fi-5000N.

To install ScandAll 21, select "ScandAll 21" at step 4.

■ Installing ScandAll 21

"ScandAll 21" is an image capturing software that complies with the TWAIN standard. The FUJITSU TWAIN 32 scanner driver enables you to capture images with a FUJITSU image scanner fi-series.

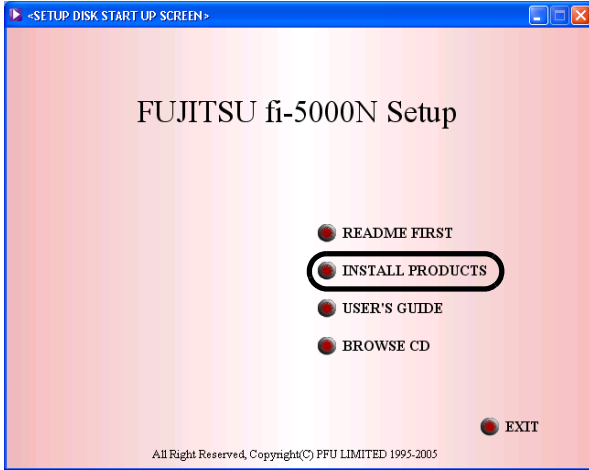
ATTENTION  When using Windows 2000 or Windows XP, log on as a user with "Administrator" rights.

- Insert the Setup CD-ROM into the CD drive.
⇒ <SETUP DISK START UP SCREEN> appears.



This screen may not appear when the "Autoplay" setting of your PC is OFF. In this case, run "Install.exe" in this CD-ROM directly from the "Explorer" or "My Computer".

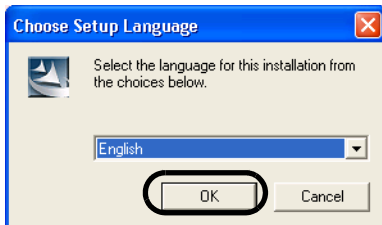
3. Click [INSTALL PRODUCTS].



4. Click [ISIS Driver] on the window below.



5. Select a language used for installation on [Choose Setup Language] window and click [OK].



6. Follow the instructions on the window to install the software.

7. When the [InstallShield Wizard Complete] window appears, click [Finish].

Your PC will be restarted. Do not remove the Setup CD-ROM until your PC has completely restarted. Now the installation of the FUJITSU ISIS scanner driver is completed.



In order to use the scanner, it is also necessary to have an application that complies with the ISIS standard. You can install "QuickScan Pro" bundled with the scanner.

2.5 Installing and Setting the fi-5000N Software

■ Installing fi-5000N Software

With the following the procedure, install the fi-5000N Software on:

- The PC of fi-5000N's Administrator
- The PCs used by the scanner users

1. Turn on the power of the PC, and log on to Windows.



When using Windows 2000 or Windows XP, log on as a user with "Administrator" rights.

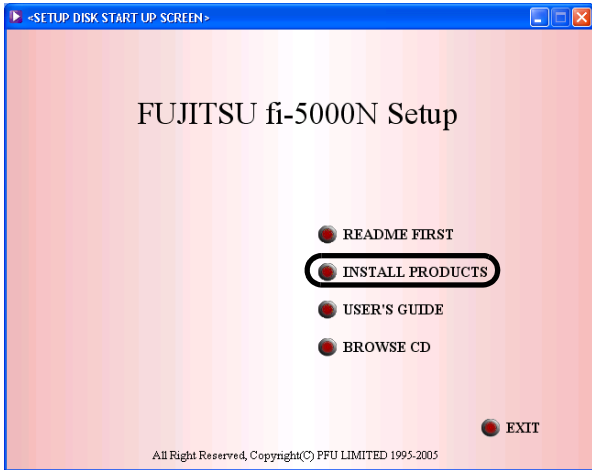
2. Insert the "Setup CD-ROM" into the CD drive.

⇒ <SETUP DISK START UP SCREEN> appears.



This screen may not appear when the "Autoplay" setting of your PC is OFF. In this case, run "Install.exe" in this CD-ROM directly from the "Explorer" or "My Computer".

3. Click [INSTALL PRODUCTS].



4. Click [fi-5000N Software] on the window below.



5. Select a language used for installation on [Choose Setup Language] window and click [OK].



6. Follow the instructions on the window to install the software.

7. When the [InstallShield Wizard Complete] window appears, click [Finish].

With this, the installation of the fi-5000N Software is completed.

■ Registering Users

The Administrator can register users on the fi-5000N by using the fi-5000N Software installed on the Administrator's PC

New registration of user information

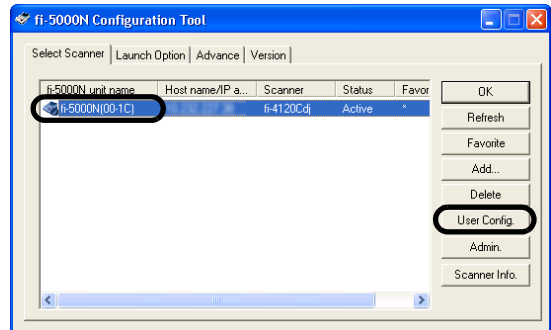
1. From the [Start] menu, select [All Programs] -> [fi-5000N Software] -> [fi-5000N Configuration Tool].



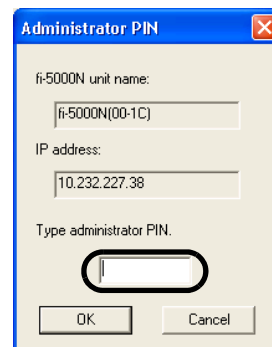
If Windows XP Service Pack 2 is installed, [Windows Security Alert] dialog box may appear when starting up fi-5000N Software. In this case click [Unblock] to start the program.



2. Select the device name, and click the [User Config] button.

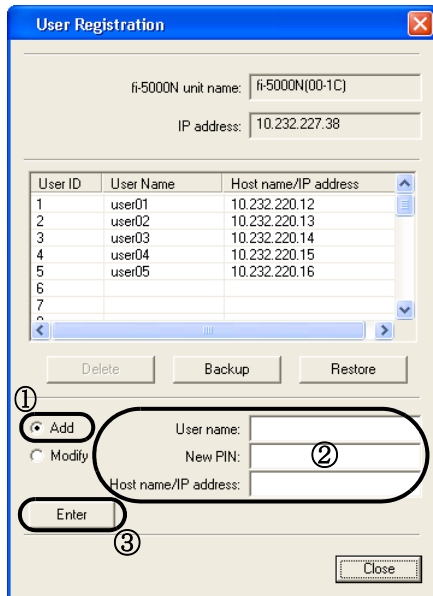


3. Enter the Administrator PIN (the default setting is "5000") when you are prompted to enter the PIN, and click the [OK] button.



⇒ The User Registration screen appears.

- Select [Add], enter the [User Name], [New PIN], [Host name/IP address], and click the [Enter] button.



⇒ The user is registered in the User List.

- To register more users, repeat Step 4.
- Click the [Close] button.

Now the users are registered on fi-5000N.

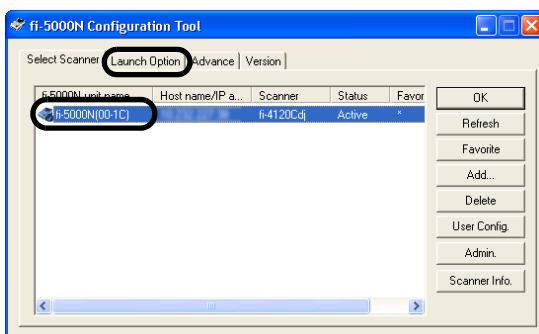
■ Configuring Scanner Settings

The User can configure the scan settings using the fi-5000N Software and the scanning software installed on the user's PC.

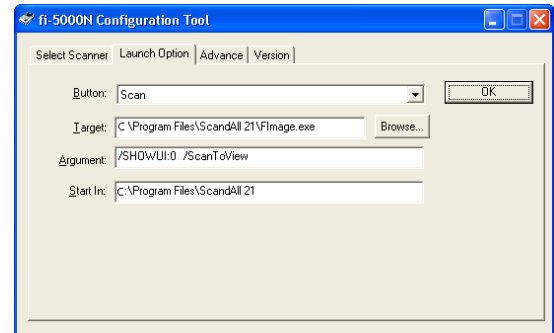
Configuring Settings on fi-5000N Software

The fi-5000N Software specifies the application that starts when the button on the scanner is pressed. (As an example here, ScandAll 21 is configured to start when the [Scan] button on the scanner is pressed.)

- From the [Start] menu, select [All Programs] -> [fi-5000N Software] -> [fi-5000N Configuration Tool].
- Select the fi-5000N unit name, and click the [Launch Option] tab.



- Configure the application to start when the following screen appears.



Button:	Selects the configured button from "Scan" and "Send To 1 ~ Send To 9". ("Scan" is selected here) (Depending on the selected button, nothing would occur if the [Target], [Argument], or [Start in] are not specified.)
Target:	Specifies the file name of the application to be started. (ScandAll 21 is selected here. -> c:\Program Files\ScandAll 21\FImage.exe)
Argument:	Passes and configures the argument to the specified application when the application starts. ("/SHOWUI:0_/ScanToView" is entered here. The "_" character indicates a space).
Start in:	Specifies the default folder when the application starts. (c:\Program Files\ScandAll 21 is entered here)



The argument that can be specified differs by application. Refer to the manual of the application for details. If an argument is not specified, the application starts up but scanning does not. To start scanning after starting up, it is necessary to specify an argument. For ScandAll 21, the following arguments are available. (you can combine and use these arguments. In this case, you have to leave a space (" ") between arguments. The arguments are in no particular order.)

/ScanToView:
Displays scanned image on screen.

/ScanToFile:
Saves scanned image to file.

/Exit:
Exits the application after scanning.

/PROGRES:0
Hides the FUJITSU TWAIN 32 progressive indicator window.

/SHOWUI:X
Displays or hides the FUJITSU TWAIN 32 setting window.
X=0: To hide
X=1: To display
X=2: To follow the setting done in ScandAll 21.

/SCANDEF:XX
Specifies the setting file of FUJITSU TWAIN 32 (XX=00~99)

/NOSCNERR
Hides the FUJITSU TWAIN 32 error messages.

/NOAPPERR
Hides the ScandAll 21 error messages.

/AppendToView
Adds the currently scanned image to the previous one to view

/NOOPDLG
Specifies not to show the following dialogbox that can be set from Scan-Option
File setting dialog
FTP server setting dialog
Print setting dialog
Microsoft SharePoint Portal Server setting dialog
Mail setting dialog

Configuring Scanning Application

Select a scanner and configure the scan settings with the scanning application.

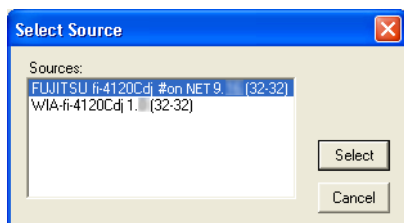
(As an example here, ScandAll 21 is used. To perform the procedure described in this section, it is necessary to install the ScandAll 21 provided with the fi-5000N.)

1. Start the application.

(From the [Start] menu, select [All Programs] -> [Scanner Utility for Microsoft Windows] -> ScandAll 21.)

2. Select the scanner to be used.

([Scan] -> [Select Source])



⇒ Select scanner name "FUJITSU" + "Device Name" + "on NET", and click the [Select] button.

3. Open the scanner driver dialog box and specify the scan settings.

([Scan] -> [To view...])

Configure all the settings, and click the [Close] button.

Refer to "FUJITSU TWAIN 32 Scanner Driver User's Guide" for details on how to configure the scan settings.



For ScandAll 21, to prevent the scanner driver screen from appearing while scanning, configure the settings below.

1. Select [Scan] -> [Option].
2. Clear the check mark on "TWAIN dialog".
Scanning starts without the scanner driver screen appearing.
3. Click the [OK] button.

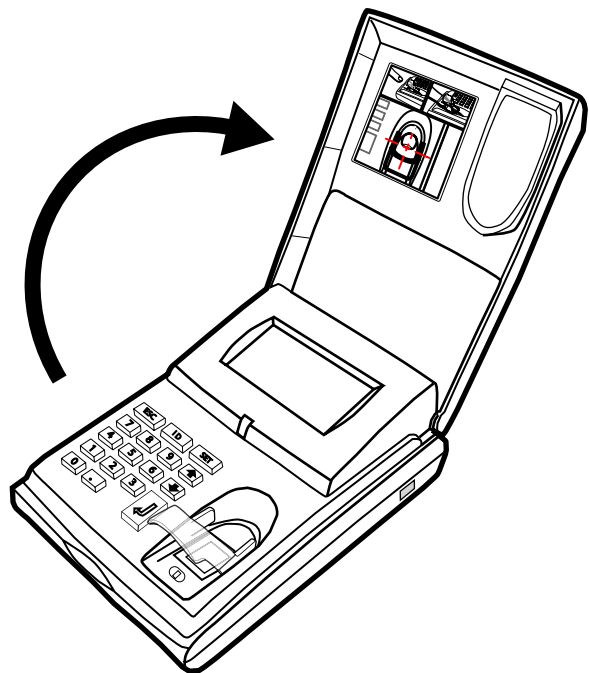
*Refer to [ScandAll 21 Help] for details on ScandAll 21 settings.

2.6 Registering Fingerprints

For user authentication, register each user's fingerprint information on this product. However, injured users and users with difficulties in registering fingerprints can be authenticated by using a PIN (personal identification number).

Register users' fingerprints following the procedure below.

1. Open the Cover.



- Confirm that the "Place your finger on the sensor" (this indicates the "Logout" status) is displayed on the fi-5000N Message Display. Then, press the [SET] key.

The following screen appears.

```
Setup
Register Finger
Change PIN Code
Show Network Config
```

- Select "Register Finger", and press the [ENT] key.

The list of registered users on fi-5000N appears.

```
Select User
1 (user's name)
2 (user's name)
3 (user's name)
```

- Press the [↑] or [↓] key to select a user from the list of registered users, and press the [ENT] key.



You can also select the registered user by entering user ID number:

- With the keyboard, enter the user ID number.
- Press the [ENT] key.
⇒ The name of the user to log in will appear selected.
- Press the [ENT] key again.



The following screen prompts you to enter the PIN of the selected user.

```
PIN: _

Cancel: [ESC]
```

- Enter the PIN set in "Registering Users" (on page 10), and press the [ENT] key.

If the PIN does not match, the message "The PIN is incorrect" is displayed, and you are prompted to enter again.

If the PIN matches, the following screen appears.

```
Look at the sticker
inside of cover for
finger placement
OK: [ENT]
```

Confirm the correct finger placement by referring to the sticker inside of the cover. For the details, please refer to "Appendix 3 Using User Authentication By Fingerprint."

Press [ENT] key, then the following screen appears.

```
Registration:

Place your finger
on the sensor
```

- Place the finger to register on the fingerprint sensor.

If your fingerprint is correctly captured, a buzzer sounds and at the same time the following screen appears.

```
Processing...

Remove your finger
from the sensor
```

- Remove your finger from the fingerprint sensor.

The following screen appears, and the fingerprint verifications will be repeated twice.

```
Fingerprint will
be verified twice.
Place your finger
on the sensor
```

- For verification procedure, place the finger to register on the fingerprint sensor again.

If the verification is successfully done, the following screen appears

```
First Verification
is successful
```

- Second verification starts.

```
Starting Second
Verification.
Place your finger
on the sensor
```

10. When the second verification process has been completed, the following message appears.

```
Second Verification
is successful
```

Then the message indicating that the fingerprint data is being saved is displayed.

```
Saving fingerprint
data...
```

Next, the registration completed message appears.

```
Registration is
successful
OK: [ENT]
```

Press [ENT] key to finish the registration.

2.7 Scan Test

Do an image scan test after configuration.

Scanning from fi-5000N ("Push" mode)

Check whether the image can be scanned successfully using the below procedures.

- User Authentication
- Loading Document
- Scanning Operation when the scanner button is pressed

■ User Authentication

To change from the logout status to the ready-to-start scanning status, fingerprint authentication must be done. Also, PIN authentication is equipped as an alternative to an injured users or users with difficulties in fingerprint authentication.

Authentication by Fingerprint

1. When "Place your finger on the sensor" message is displayed, place the registered finger on the fingerprint sensor.

```
Place your finger
on the sensor
```



When you learn to place the finger correct, you can remove the Finger Guide. For the removal, refer to "Appendix 3 Using User Authentication By Fingerprint."



When the finger placed on the fingerprint sensor is detected, the following message appears and the fingerprint capturing begins.

```
Capturing
fingerprint...
```

2. If the capturing of your fingerprint is successfully done, a buzzer sounds and at the same time the following screen appears. Remove your finger from the fingerprint sensor.

```
Identifying...

Remove your finger
from the sensor
```

3. Next, the identification of your fingerprint begins.

If the identification of your finger is successfully done, a buzzer sounds and the following screen appears.

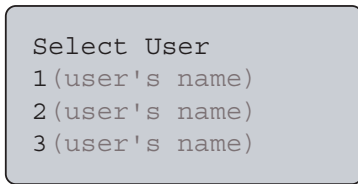
Load the document on to ADF and press [Scan] or [Send to] button on the scanner.

```
(user's name)
Load the documents
onto scanner & press
[Scan] / [Send to]
```

Authentication by PIN

1. At the logout status, open the cover and press the [ID] key.

The "Select User" screen appears as follows.



2. Select the registered user with the [↑], [↓] keys, and press the [ENT] key.

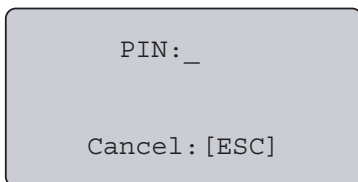


You can also select the registered user by entering user ID number:

1. With the keyboard, enter the user ID number.
2. Press the [ENT] key.
⇒ The name of the user to log in will appear selected.
3. Press the [ENT] key again.



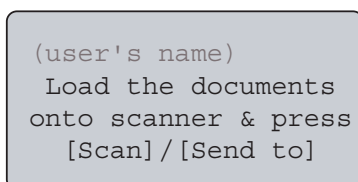
The next screen appears, and the PIN is prompted.



3. Enter the user's PIN, and press the [ENT] key.

If the PIN does not match, the message "The PIN is incorrect" appears, and you are prompted to enter again.

4. If the PIN matches, a buzzer sounds and the following screen appears.



■ Starting the Scanning Operation

Load a document on the scanner connected to fi-5000N, and press the [Scan] button (or the [Send to] button depending on fi-5000N Software [Launch] option setting) on the scanner.

Scanning starts, and the document is ejected.

The operation is successfully done if the ScandAll21 software (installed on the image data receiving computer) starts and the scanned image appears on the monitor screen.

Appendix 1 Troubleshooting

Before you ask for repair service, check the following first.

Check also the fi-5000N Message Display if any error description is shown. To understand the error message and required actions, refer to "fi-5000N Operator's Guide" for details.

If you cannot solve the problem by referring to these, contact the store where you purchased the fi-5000N, or contact an authorized FUJITSU scanner service provider.

Symptom	Check this item	Remedy
fi-5000N cannot be turned on. (Power lamp (LED) is not lighted)	Is the power switch turned on?	Turn on the power switch.
	Are the AC adapter and the power cable of fi-5000N connected correctly?	Re-connect the AC adapter and the power cable correctly.
	Turn off the power, and disconnect the USB cable. Is the power restored when you turn on the power again?	Check whether there is a problem with the USB cable or the power cable.
	Turn off the power, and disconnect the network cable. Is the power restored when you turn on the power again?	Check whether there is a problem with the network cable or the network (such as hub, router).
	The power lamp (LED) could be damaged If any of the following is observed: Is the lamp on the network connector blinking (orange)? Do messages appear on the Message Display? Can the problematic fi-5000N be seen from the fi-5000N software?	Turn on the power again.
Nothing is displayed on the Message Display	Is the power lamp of fi-5000N lighted up?	Turn off the power switch. Check that the AC adapter and the power cable are connected, and then turn on the power.
	Turn off the power of fi-5000N, and disconnect the USB cable. Does the problem prevail even after you turn on the power again?	Check whether there is a problem with the USB cable or the power cable.
	Turn off the power of fi-5000N, and disconnect the network cable. Does the problem prevail even after you turn on the power again?	Check whether there is a problem with the network cable or the network (such as hub, router).
The fi-5000N's keyboard does not respond when the keys are pressed	Are the power lamp of fi-5000N lighted, and messages displayed on the Message Display?	Turn off the power switch. Check that the AC adapter and the power cable are connected, and then turn on the power.

Symptom	Check this item	Remedy
Scanning does not start when the [Scan] or [Send to] button is pressed.	Is the scanner showing an error code? (Does "U" or "E" appear on the Function Number display of the scanner?)	Note down the displayed message, and take the appropriate action subject to the displayed message.
	Does any error message appear on the fi-5000N?	Take the appropriate action subject to the displayed message.
	Turn off the fi-5000N and reconnect the USB cable. Does the problem prevail even after you turn on the power again?	Check whether there is a problem with the USB cable or the scanner.
	Turn off the fi-5000N and reconnect the network cable. Does the problem prevail even after you turn on the power again?.	Check whether there is a problem with the network cable or the network (such as hub, router).
fi-5000N does not appear in the [Select Scanner] tab of the fi-5000N Software. (Unable to communicate over the network)	<ol style="list-style-type: none"> 1. Is the network cable connected? 2. Is the Hub turned on? 3. Is the fi-5000N's IP address set correctly? 4. Is the fi-5000N turned on? 	Check whether there is a problem with the network cable or the network (such as hub, router).
A message informing that scanner is not found appears during scanning.	<p>Verify in the fi-5000N Software the following points:</p> <ol style="list-style-type: none"> 1. Is the fi-5000N being used set as "favorite"? 2. Is the scanner connected to the fi-5000N? 3. Does the fi-5000N appear as "Inactive" in the [Scanner Select] tab? 4. Did you set the fi-5000N network connection using DHCP configuration? 	Start the fi-5000N Software, and check whether there is a problem with the network settings or whether the fi-5000N is selected correctly.

Appendix 2 Daily Care



Before you clean the fi-5000N, turn off its power and unplug the AC adapter from the outlet.

■ Cleaning Materials

Cleaning Materials	Parts Number	Remarks
Cleaner F1 (or isopropyl alcohol)	CA99501-0013	1 bottle Moisten the cloth with this fluid and wipe the scanner clean.(*) Do not use it for cleaning printed characters, logos and marking areas.
Lint-free dry cloth	Commercially available one	

* For details about the cleaner F1, contact the FUJITSU dealer where you purchased the fi-5000N.

■ Parts to Clean and When

Part to clean	Cleaning Method	Remarks
Cover	Wipe the Cover with a lint-free dry cloth.	
Fingerprint Sensor	Wipe the Fingerprint Sensor gently with a lint-free dry cloth.	Do not splash any liquids or allow the fi-5000N to get wet. Do not use flammable solvents such as benzene.



Cleaning the Fingerprint Sensor

When the fingerprint sensor presents the following, the sensor might not function correctly. Clean the sensor surface on a regular basis.

- Sensor surface is dirty with dust or any other dirt
- Sensor surface is wet.
- There are dew drops on the sensor surface.

Clean the fingerprint sensor when the following problems occurs. Cleaning the sensor might solve such problems.

- The Display Message shows "Sensor surface not clean. Please wipe sensor, and restart device".
- Although the finger is away from the sensor, the Display Message keeps showing "Remove your finger from the sensor".
- Fingerprint registration failures and/or fingerprint identification failures occur frequently.

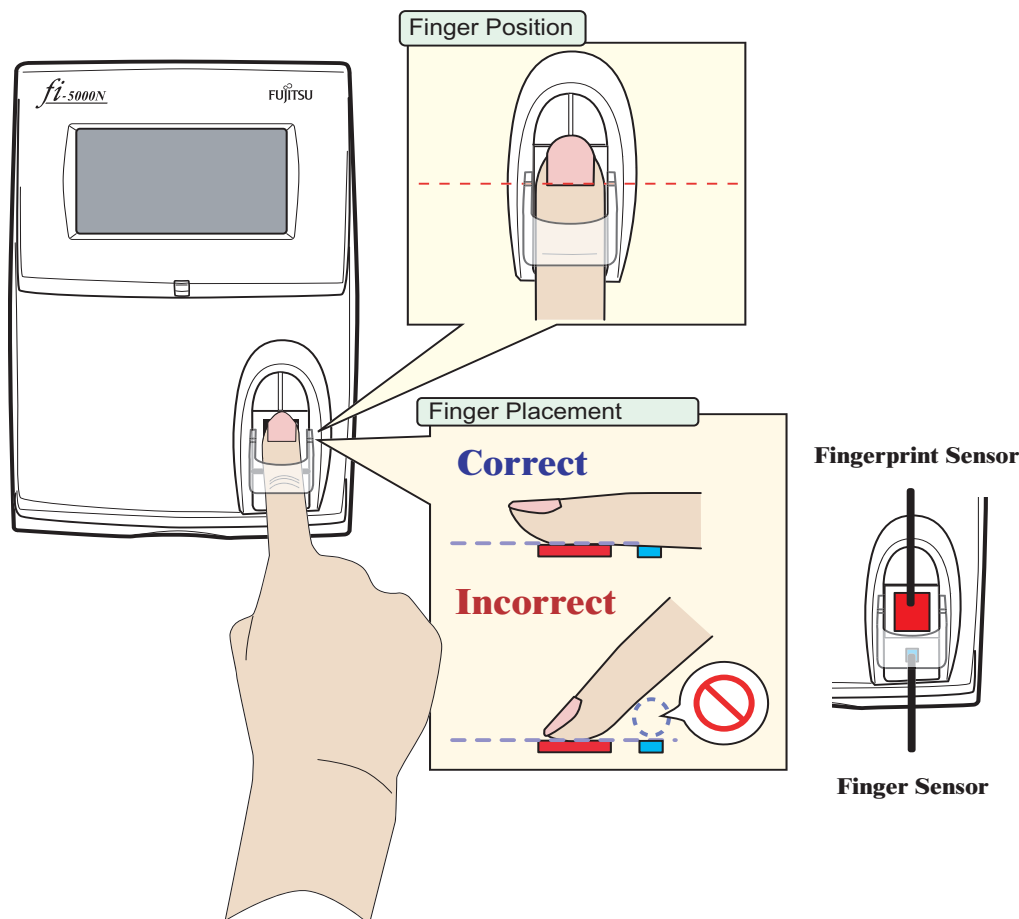


Appendix 3 Using User Authentication By Fingerprint

■ How to place your finger on the sensor

Pay attention to the following points when performing fingerprint registration or authentication.

- For reliability, align your finger such that the virtual line connecting the white positioning marks on the both sides of the fingerprint sensor crosses the base of your fingernail, and press your finger to the sensor.
- Make sure your finger covers the finger (detection) sensor. (Do not let your finger float away from the sensor.)



The following finger conditions may cause a registration or authentication failure.

- The skin of finger gets rough or is extremely dry.
- The finger surface is wounded or has suffered an abrasion so that the fingerprint mark becomes thin.
- The fingerprint has been changed due to a rapid gain or loss of weight.

Washing, wiping, or using a different finger may improve the situation.

■ Caution on fingerprint sensor usage

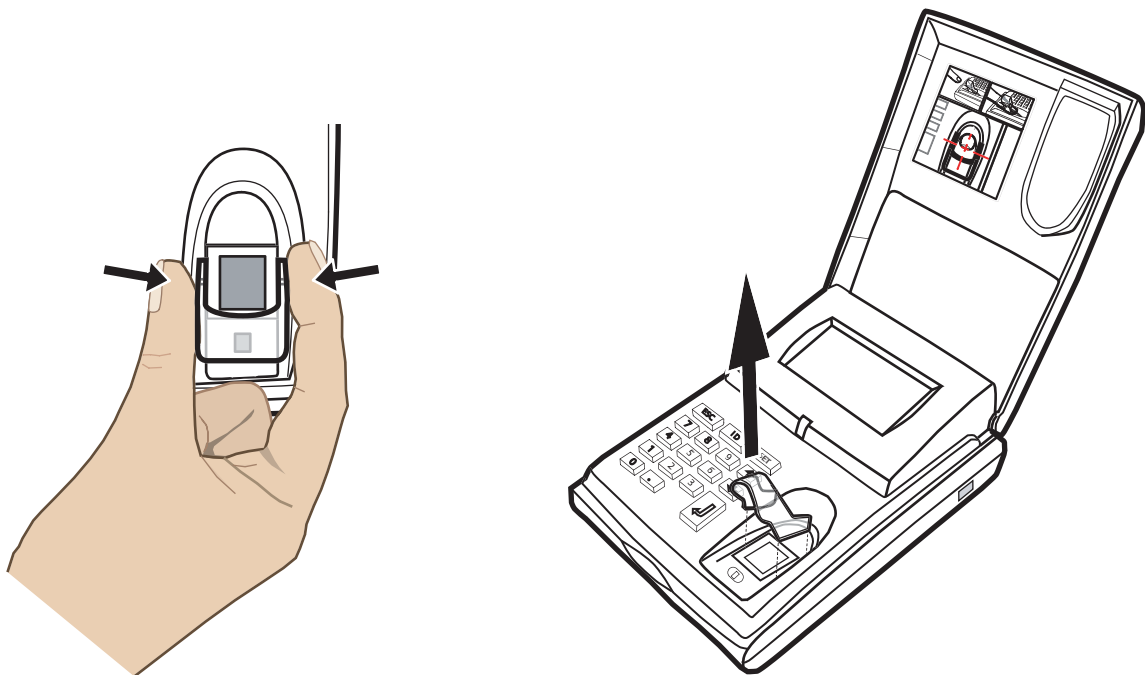
- Discharge static electricity from your finger by touching a metallic object before placing your finger on the sensor. Static electricity may cause a sensor failure. This procedure is particularly important in dry winter season.
- Do not scratch, or pick at the sensor with a sharp-pointed item. This can damage the sensor.
- Do not rub the surface with your fingernail or hard item. This can damage the surface and lead to failure.
- Do not touch the surface with a muddy or dirty finger which may be damaged, or contaminate the surface leading to failure.
- Do not put a sticker on the sensor or paint its surface. This can lead to failure.
- The following may cause difficulties in capturing fingerprints. Clean the sensor on a regular basis.
 - Sensor surface is dirty with dust or fat content from finger.
 - Sensor surface is moist with perspiration
 - Sensor surface is moist with dew condensation
- If the following problems occur, clean the sensor surface. The situation may improve.
 - "Processing... Remove your finger from the sensor" message keeps appearing.
 - Registration or authentication failures occur frequently.
- When cleaning the sensor, use a dry lint-free cloth and wipe it gently.

■ Removing Finger Guide

For the ease of fingerprint registration by letting you place your finger correctly, the Finger Guide is installed on the fi-5000N fingerprint sensor area. When you get accustomed to placing the finger correctly on the fingerprint sensor, you can remove the Finger Guide.

To remove the Finger Guide, follow the instructions below.

- 1) Hold both sides of the Finger Guide.
- 2) Squeeze the guide lightly to detach its pins.
- 3) Lift the guide up and remove it from the fi-5000N.



fi-5000N Getting Started

P3PC-1122-02EN

Date of issuance: February, 2005

Issuance responsibility: PFU LIMITED

Printed in Japan

- Copying of the contents of this manual in whole or in part is forbidden under the copyright law.
- The contents of this manual are subject to change without notice.
- PFU LIMITED. is not liable whatsoever for any damages resulting from use of this scanner and procedures described in this manual, profit loss due to defects, and any claims by a third party.